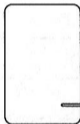


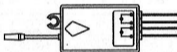
Wireless Switch

User Manual

Product Appearance



Wireless Switch



Receiver



Wire Connector
(Optional)



Hand Remote Control
(Optional)

* Note: The product depicted in this manual may appear *
slightly different from what you receive in the box

This device complies with part 15 of the FCC Rules. Operation is subject to the condition that this device does not cause harmful interference (1) this device may not cause harmful interference, and (2) this device must accept any interference received, including interference that may cause undesired operation. Any changes or modifications not expressly approved by the party responsible for compliance could void the user's authority to operate the equipment.

NOTE: This equipment has been tested and found to comply with the limits for a Class B digital device, pursuant to Part 15 of the FCC Rules. These limits are designed to provide reasonable protection against harmful interference in a residential installation. This equipment generates, uses and can radiate radio frequency energy and, if not installed and used in accordance with the instructions, may cause harmful interference to radio communications. However, there is no guarantee that interference will not occur in a particular installation.

If this equipment does cause harmful interference to radio or television reception, which can be determined by turning the equipment off and on, the user is encouraged to try to correct the interference by one or more of the following measures:

- Reorient or relocate the receiving antenna.
- Increase the separation between the equipment and receiver.
- Connect the equipment into an outlet on a circuit different from that to which the receiver is connected.
- Consult the dealer or an experienced radio/TV technician for help.

To maintain compliance with FCC' s RF Exposure guidelines, This equipment should be installed and operated with minimum distance between 20cm the radiator your body: Use only the supplied antenna.

Manufacturer: Shenzhen King-Serry Electronics Co.,Ltd

Agent Company: ALTOM INTERNATIONAL INC

Address: 9638 RUSH STREET STE D,SOUTH EL MONTE,
CA91733

Fax: 001-6264444761

E-mail: bestrose2003@king-serry.com



FCC ID:

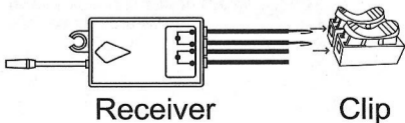
2ANPS-SWK1R01

2ANPS-KS-DB03

Installation Warnings:

1. Had better program the switch from receiver for first installation.
- 2. Protect the receivers from damage by falling from height over 1m.**
- 3. Do not touch the output live line with output neutral line after wiring, or receiver will be short circuit.**
4. It is not advisable to install switch on metal surface or receiver in a metal confined cover, metal will shield wireless signal, thus shortening remote control distance.
5. Install the receivers where man cannot reach.

Cautious: Do not protruding wires at both connector terminals.

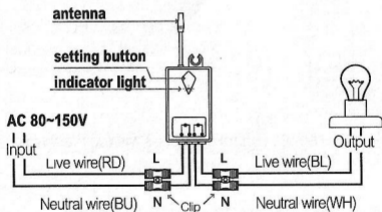


WARNING!
Please power off
before installation!



Caution

Cautious: Do not protruding wires at both connector terminals.



Reminder: When received the product, the wireless switch and the receiver must be paired up before use. Please refer to the 3rd page : learning code guide.

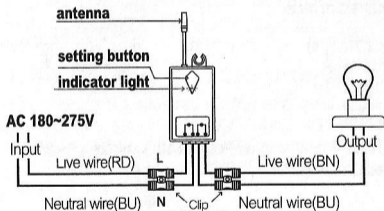
WARNING!

Please power off
before installation!



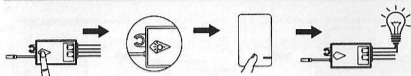
Caution

Caution: Do not protruding wires at both connector terminals.



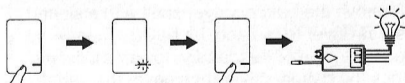
Reminder: When received the product, the wireless switch and the receiver must be paired up before use. Please refer to the 3rd page : learning code guide.

Learning Code Operation



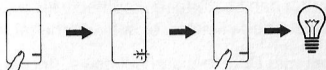
1. Connect the receiver between the light and the power source.
2. Power on electricity, press and hold the setting button for 2 seconds. When the indicator light flashes, it enters into matching code mode, then loosen your finger.
3. Press the wireless switch button that you want to pair. Use the wireless switch to control the light on or off, indicating that the learning code is successful.
4. Not recommended that 1 switch controls many receivers.

Adding a switch from paired switch



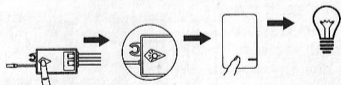
Press and hold paired switch panel for about 20s till LED indicator on switch blinks rapidly, then loosen your finger, press the new one, finally test whether it can turn on/off the lamps.

Delete the switch code that has been paired (Please use cautiously)



Press and hold paired switch panel for about 60s, during which LED indicator on switch changes from: firstly blinks rapidly; secondly blinks 8 times slowly, thirdly blinks 9 times at slower speed, finally blinks once at slowest speed, then loosen your finger, press the switch panel again cannot control the lamps.

Delete the paired wireless receiver code (Please use cautiously)



Press and hold the receiver button for about 10s, loosen you finger when indicator light changes from rapid blinks to slower, press the paired switch panel cannot control the lamps.